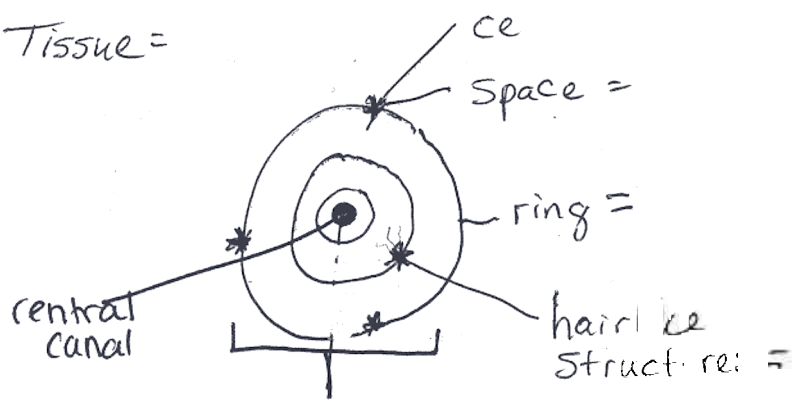


Tissue =



rotation

Bone Histology

	%
2	25%
* 3	50%

4 Cell types of Bones 10

- 1 mesenchyme
- 2 immature (bone builders)
- 3 mature
- 4 osteoclast bone

Type Bone Tissue

- 1)
- 2)

2

Tissue - Compact Bone

Cell - Osteocyte

Space - lacunae

Ring - lamellae

Hairlike Structures - Canaliculi

location - diaphysis of long bo

A = Osteon

25% Water

25% Protein fiber

50% mineral salts

- 1) Osteogenic - unspecialized cells from mesenchyme become osteoblast
- 2) Osteoblast - building bone active in secreting matrix - becomes osteocytes.
- 3) Osteocytes - mature bone cells maintain cell activity.
- 4) Osteoclast - derived from white Bld cell break down bone - lysosomal enzymes

1) 80% Compact Bone

2) Spongy Bone